



Gluware® Pro Audit Get Started

March 26, 2021

Copyright © 2021 Gluware, Inc. All rights reserved. ALL STATEMENTS, INFORMATION, AND RECOMMENDATIONS (COLLECTIVELY, "INFORMATION") IN THIS DOCUMENT ARE PRESENTED "AS IS," WITH ALL FAULTS. GLUWARE, INC. AND ITS SUPPLIERS DISCLAIM ALL WARRANTIES, INCLUDING, WITHOUT LIMITATION, THE WARRANTY OF MERCHANTABILITY, FITNESS FOR A PARTICULAR PURPOSE AND NON-INFRINGEMENT OR ARISING FROM A COURSE OF DEALING, USAGE, OR TRADE PRACTICE. IN NO EVENT SHALL GLUWARE, INC. OR ITS SUPPLIERS BE LIABLE FOR ANY INDIRECT, SPECIAL, CONSEQUENTIAL, OR INCIDENTAL DAMAGES, INCLUDING, WITHOUT LIMITATION, LOST OF PROFITS OR LOSS OR DAMAGE TO DATA ARISING OUT OF THE USE OR INABILITY TO USE THE INFORMATION, EVEN IF GLUWARE, INC. OR ITS SUPPLIERS HAVE BEEN ADVISED OF THE POSSIBILITY OF SUCH DAMAGES. Gluware, the stylized "[g]luware" logo and the stylized "[g]" logo are registered trademarks of Gluware, Inc. and/ or its affiliates in the United States and certain other countries. All third-party trademarks, registered trademarks, service marks, or registered service marks are the property of their respective owners. All product names and brands mentioned herein are property of their respective owners. All company, product, and service names used in this document are for identification purposes only. Use of these names and brands does not imply endorsement. Reproduction in whole or in part in any form without prior written permission is prohibited. Gluware, Inc. believes the information contained herein to be accurate as of the publication date; such information is subject to change without notice.



2020 L Street, Suite 130 | Sacramento | CA | 95811
+1 916 913 8062 | www.gluware.com

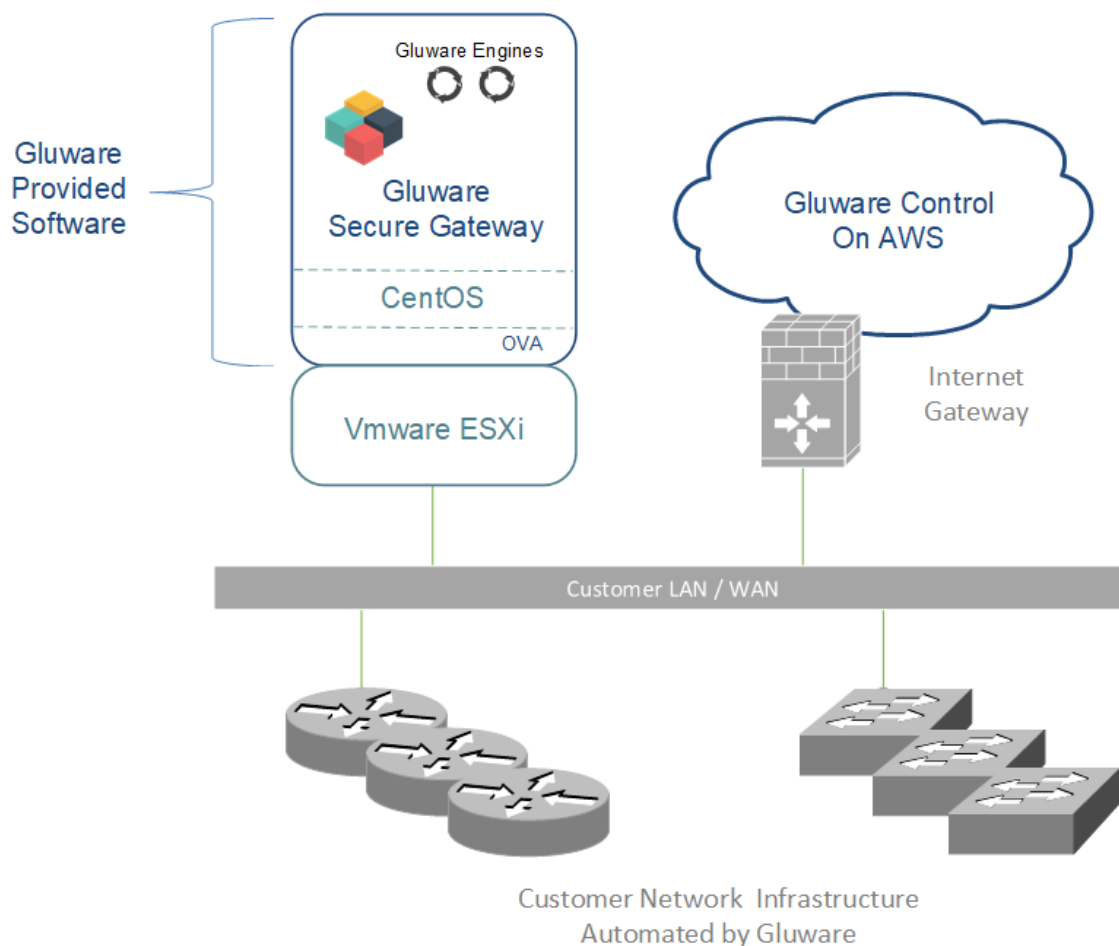
Table of Contents

About Gluware Pro Audit.....	1
Browser requirements	2
System requirements	2
Network connectivity requirements	3
Internet connectivity.....	3
Gluware Secure Gateway to device connectivity.....	3
Supported Platforms.....	3
Installing Gluware Pro Audit.....	4
Install the Gluware Secure Gateway	4
Sign in to Gluware	8
Exploring Gluware.....	9
Tailor your environment	9
Add your devices.....	9
Run an audit.....	9
Getting help	10
Tutorials	10
Online Help	10
<i>Gluware User Guide</i>	10
Training	10
Online Community	10
Knowledge Base	11
Gluware Support	11
Upgrading Support and adding Gluware solutions.....	12

About Gluware Pro Audit

Gluware Pro Audit includes the Gluware **Device Manager** and **Config Drift and Audit** solutions that form the foundation of the industry leading network automation platform. **Gluware Pro Audit** is designed to get you started using Gluware with little effort.

The **Gluware Secure Gateway** (GSG) is installed on your network to ensure secure access. Gluware Customer Support maintains an encrypted Gluware instance on AWS that communicates with your GSG. This architecture ensures maximum uptime and system health while ensuring you control communication to your network infrastructure. To provide redundancy, a second Gluware Secure Gateway may be installed on your network.



Browser requirements

Google Chrome™, desktop versions (not iOS)

Recommended resolution: 1920 x 1080 pixels

Minimum resolution: 1280 x 1024 pixels

Other browsers may work, but the user experience may vary.

System requirements

Gluware Secure Gateway	Minimum requirements
Disk space	128 GB
Memory	6 GB
CPUs/vCPUs	2 CPUs, 2.4 GHz
Other	Unique static IP address

Network connectivity requirements

Gluware Pro Audit requires internet connectivity from the installed **Gluware Secure Gateway**. The Gluware Secure Gateway communicates with a Gluware instance on AWS using the following network port numbers.

Internet connectivity

Source	Destination	Ports
Gluware Secure Gateway	AWS	SSH (TCP 22)

All communication to your network infrastructure is initiated by the Gluware Secure Gateway residing at your chosen network location.

Gluware Secure Gateway to device connectivity

Source	Destination	Ports
Gluware Secure Gateway	Customer network device	SSH (TCP 22) or Telnet (TCP 23)

Supported Platforms

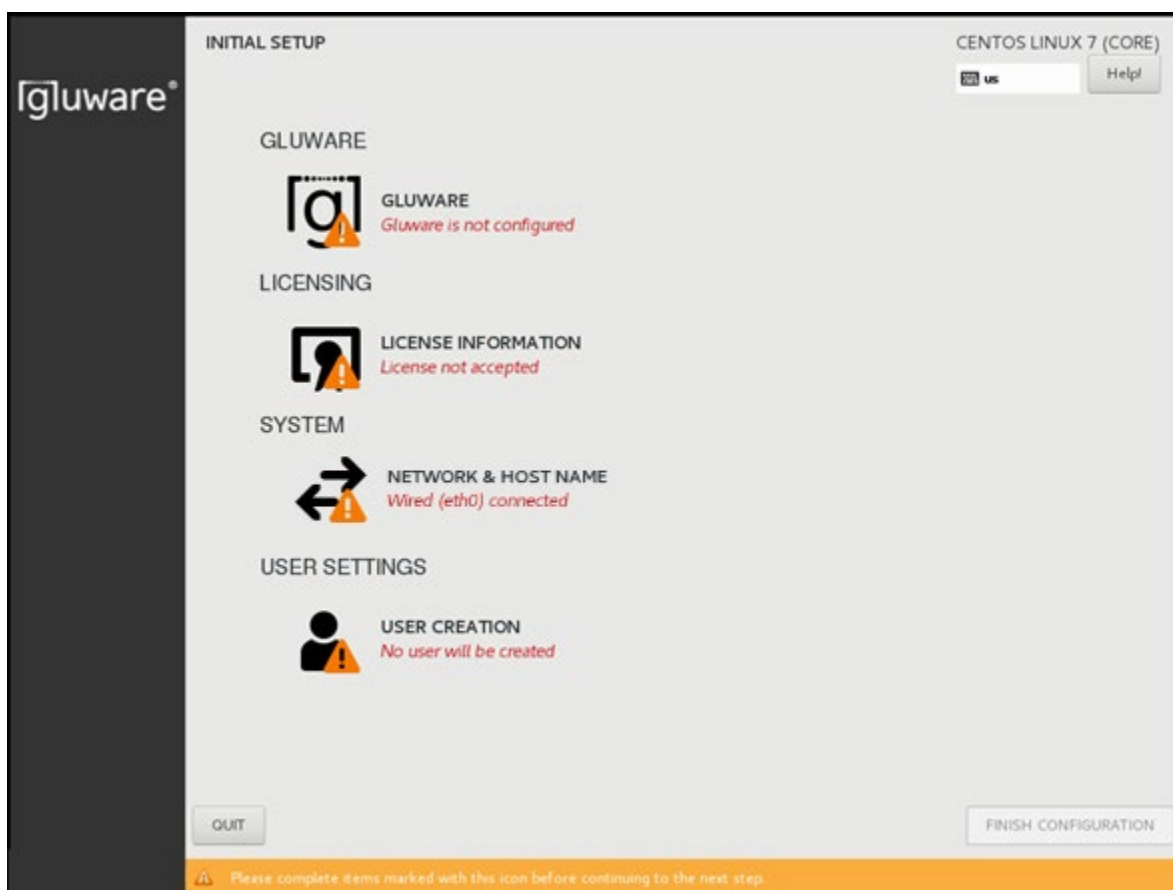
The vendors and network operating systems currently supported are listed at <https://gluware.com/supported-platforms/>.

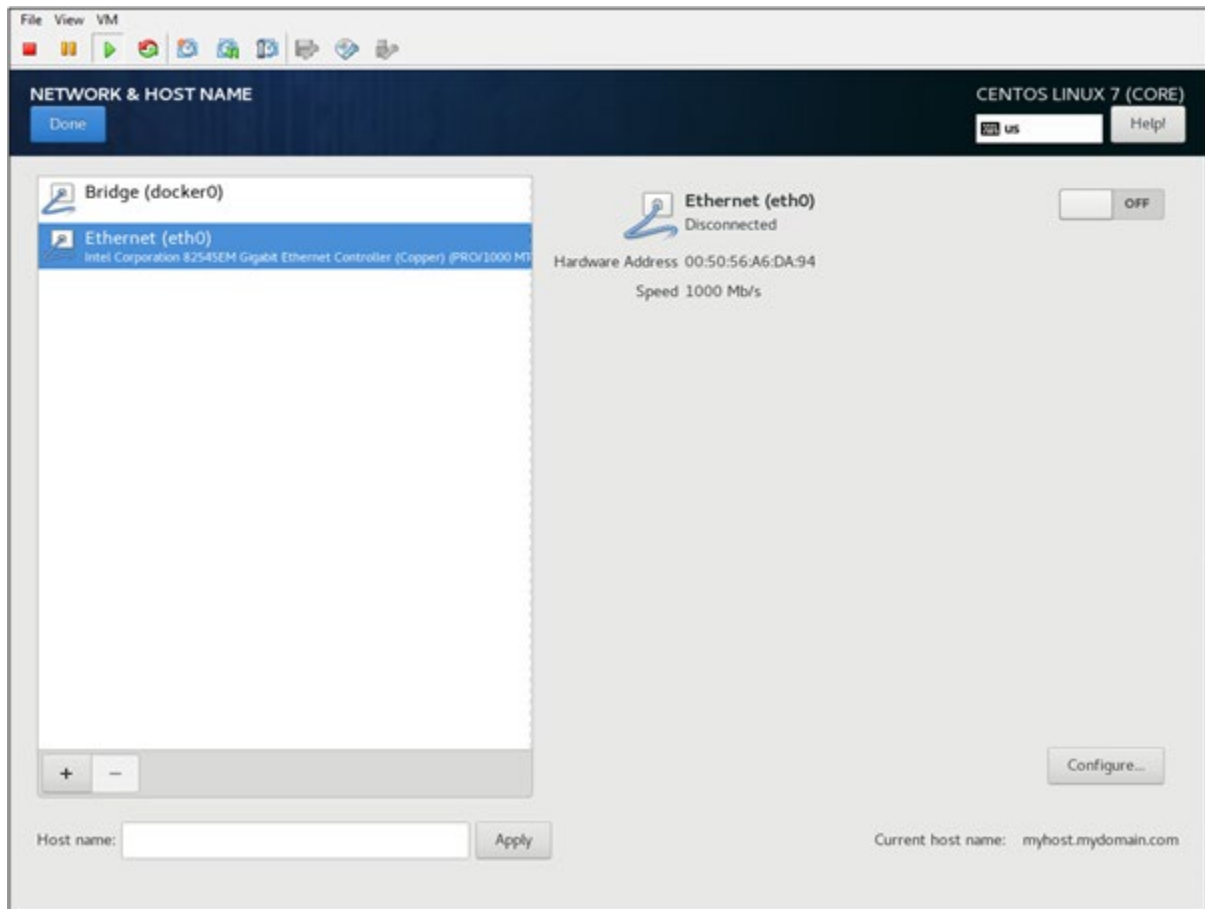
Installing Gluware Pro Audit

A link to download **Gluware Pro Audit** is emailed to the address you used at signup.

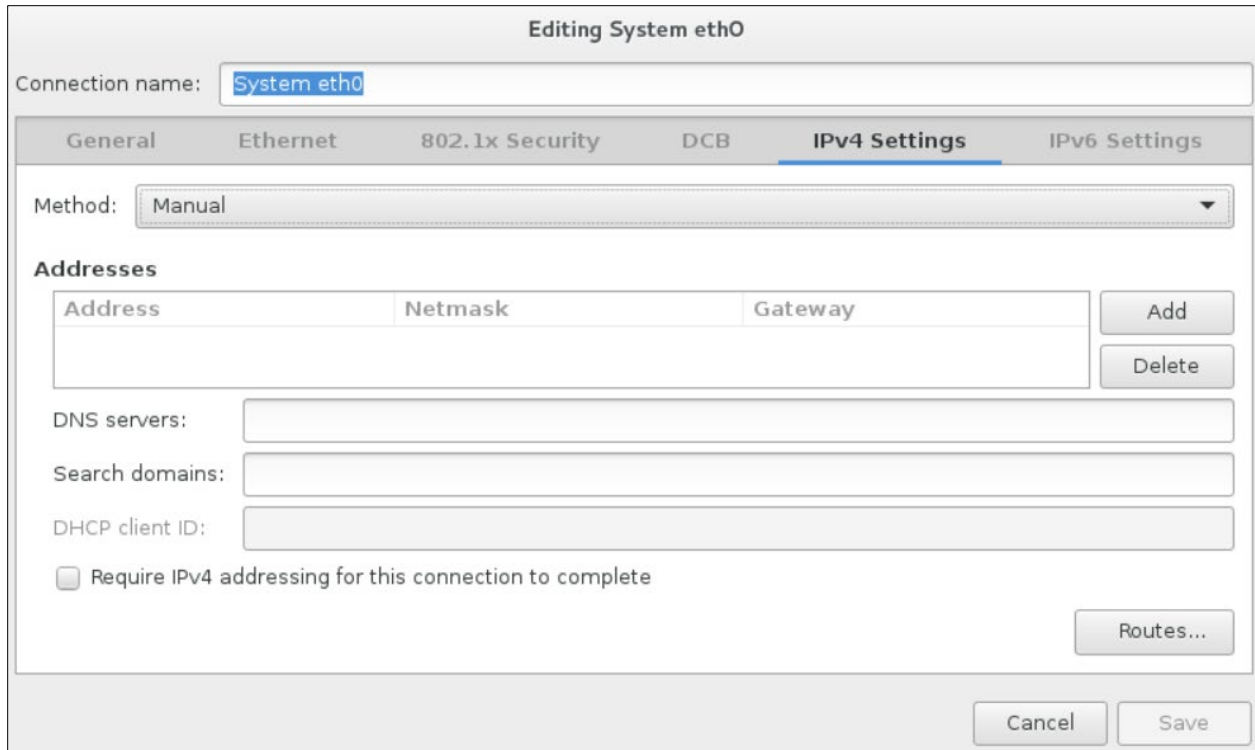
Install the Gluware Secure Gateway

1. Install the OVA and power it on.
2. Open the **VMware Console**.
3. On the **INITIAL SETUP** screen, **first** select **NETWORK & HOST NAME**.





4. Ensure that **Ethernet (eth0)** is selected. (Don't change the **Bridge (docker0)** settings.)
5. Enter the fully qualified host name you want for this host and click **Apply**.
6. Click **Configure** to define your network configuration on the eth0 adapter.



7. Select the **IPv4 Settings** tab.
8. Select **Manual** from the **Method** drop-down list.
9. Click **Add** and enter your network definition: the IP **Address**, **Netmask**, and **Gateway** to assign for this host. It must be consistent with the virtual switch that was assigned for this host when setting up the virtual machine.

NOTE: A static IP address is recommended. Use of DHCP is not recommended.

10. Click **Save** to store your network configuration.
11. Click **Done** to complete your network definition.

The Ethernet (eth0) setting is based on the hypervisor virtual network setup on which the CentOS image has been built. If you need to change the Ethernet settings in CentOS for any reason, from the CentOS desktop select **Applications > System Tools > Settings > Network**, where the network settings can be adjusted for the CentOS system.

12. On the **INITIAL SETUP** screen, select **SECURE GATEWAY**.

SECURE GATEWAY

CENTOS LINUX 7 (CORE)

Done

us Help!

Gluware Credentials

Gluware Host

Username

Password

Initialize

13. Verify the Gluware host name: **pro.gluware.com**.

14. Enter the **Username** and **Password** sent to you in email.

15. Click **Initialize**. You'll see a success message.

16. Click **Done**.

17. On the **INITIAL SETUP** screen, select **LICENSE INFORMATION**.

18. Check the box to accept the CentOS license agreement.

19. Click **Done**.

20. On the **INITIAL SETUP** screen, select **USER CREATION**. The system administrator local user account needs to be created. This isn't a Gluware user—it's the CentOS user that will administer the Gluware system.

The screenshot shows the 'CREATE USER' interface for CentOS Linux 7 (CORE). The form has a dark blue header with 'CREATE USER' on the left and 'CENTOS LINUX 7 (CORE)' on the right. Below the header is a 'Done' button. The main form area is light gray and contains the following elements: a 'Full name' text input field; a 'User name' text input field; a tip: 'Tip: Keep your user name shorter than 32 characters and do not use spaces.'; two checkboxes: 'Make this user administrator' (unchecked) and 'Require a password to use this account' (checked); a 'Password' text input field with a strength indicator below it showing 'Empty'; a 'Confirm password' text input field; and an 'Advanced...' button at the bottom.

21. Enter the CentOS user's first and last name (**Full name**).
22. Provide the **User Name** and **Password** the CentOS user will use to administer the Gluware system. Create a strong password to protect access to Gluware.
23. Confirm the password and click **Done**.
24. On the **INITIAL SETUP** screen, click **FINISH CONFIGURATION**.

Sign in to Gluware

Sign in to Gluware at <https://pro.gluware.com/>. Your username is your email address. Your password was sent to your email address.

Exploring Gluware

Tailor your environment

Go to Gluware **Solutions Management** and install the Config Modeling Kits for your devices. See “Install packages” in online Help for how-to info.

Add your devices

Gluware provides a walkthrough of the **Device Manager** and **Config Drift and Audit** solutions at <https://gluware.com/resources/tutorials/>.

Run an audit

Gluware includes example DoD SIG and NIST CIS audit policies for Cisco IOS that you can run against your devices. (These examples may not meet the full requirements of the compliance specifications.) See the Gluware tutorial at <https://gluware.com/resources/tutorials/config-audit/>.

Getting help

Tutorials

Gluware provides walkthroughs of the Gluware solutions and how to use them. The tutorials are available at <https://gluware.com/resources/tutorials/>.

Online Help

Click ? on the Gluware title bar for online **Help**.

Gluware User Guide

Access the *Gluware User Guide* in the **Guides & Tech Notes** section of the Gluware Support portal at <https://support.gluware.com/hc/en-us>.

Training

The **Gluware Pro Automation** offer includes web conference training. The training focuses on intermediate and advanced concepts of the **Config Drift and Audit**, **Config Modeling**, and **OS Manager** solutions. Course times and training recordings are posted to the Online Community.

Recorded training is periodically posted to the Gluware Support Community.

Online Community

Your **Gluware Support Community** account is established under the email address you used at signup. The community is available at <https://support.gluware.com>.

Knowledge Base

Gluware publishes a **Knowledge Base** with time-relevant topics for our customers and partners. The Knowledge Base is available at <https://support.gluware.com>.

Gluware Support

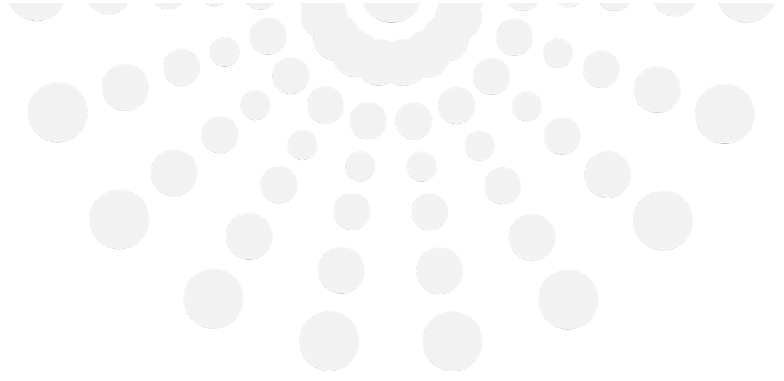
Gluware Pro entitles you to access Gluware Tier 2 and Tier 3 Support. You'll receive an email with a verification link to activate your account from support@gluenetworks.zendesk.com.

You can open a ticket with Gluware on our Support portal at <https://support.gluware.com>, by sending an email to support@gluware.com, or by phone at these toll free numbers:

- US: 1-855-458-3822
- UK: 0808-134-9906
- Netherlands: 0-800-023-2194
- Australia: 1-800-987-824
- NZ + 0800-005-106

Upgrading Support and adding Gluware solutions

To upgrade from 8x5 Gluware Tier 2 or Tier 3 Support to 24x7 or to add the Gluware **OS Manager**, **Config Modeling**, or **Workflow** solutions, contact Gluware at <https://gluware.com/company/contact/> or via email to sales@gluware.com.



2020 L Street, Suite 130
Sacramento, CA 95811

www.gluware.com

© 2020 Gluware, Inc. All rights reserved.